



VACHERON CONSTANTIN
GENÈVE



P 05 — A 270-YEAR QUEST FOR EXCELLENCE

P 10 — LES CABINOTIERS

P 34 — TRADITIONNELLE

P 76 — PATRIMONY

P 96 — OVERSEAS

P 134 — ÉGÉRIE

P 146 — FIFTYSIX

P 160 — HISTORIQUES

P 176 — MÉTIERS D'ART

P 186 — HEURES CRÉATIVES

P 192 — LES COLLECTIONNEURS & RESTORATION SERVICE

P 198 — CALIBRES & COMPLICATIONS

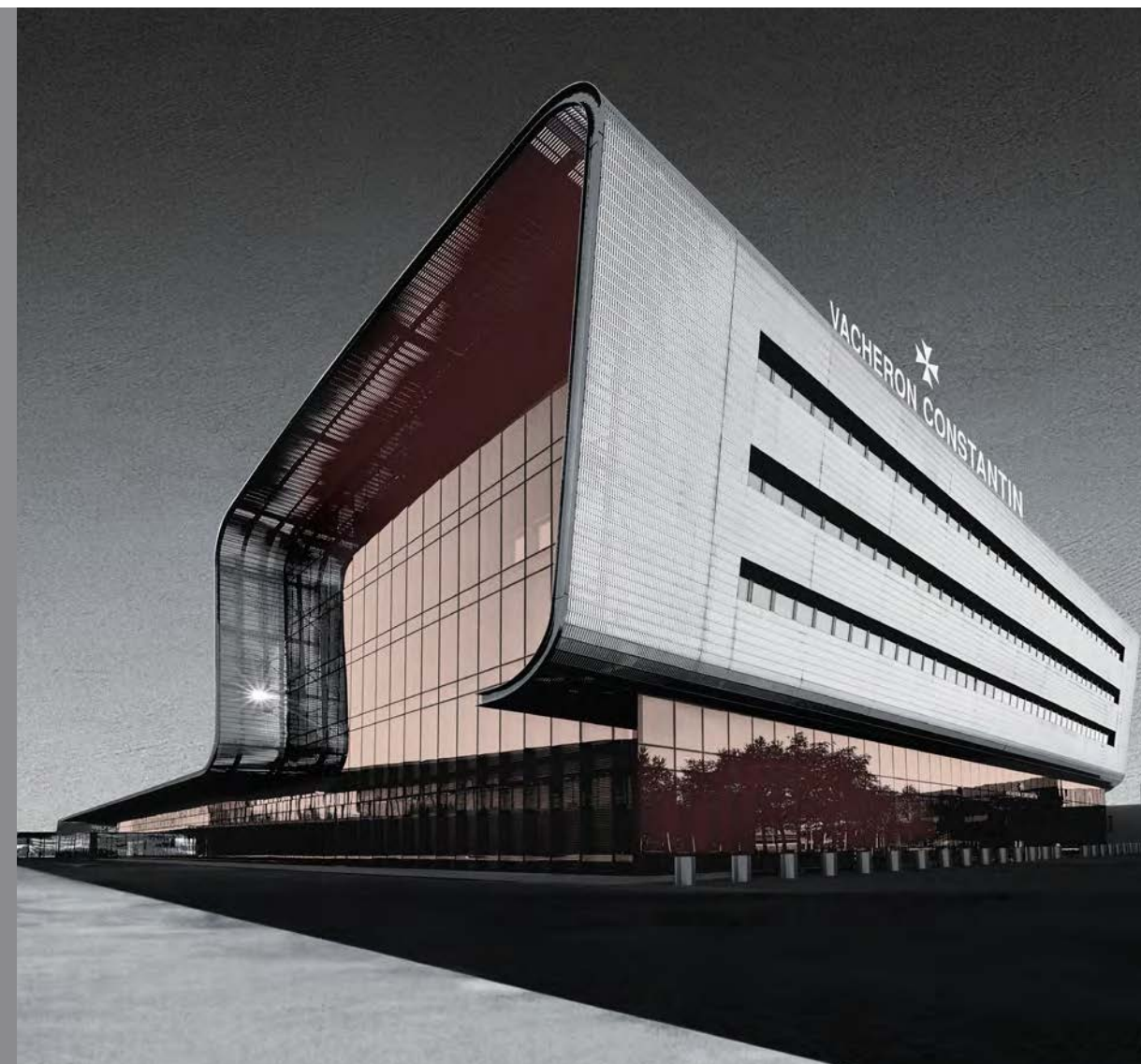


*Faire mieux si possible,
Ce qui est toujours possible.*



A 270-YEAR QUEST FOR EXCELLENCE

In 1755 in Geneva, Jean-Marc Vacheron began writing the first chapter of a story that has become a remarkable human adventure. Dotted with milestone innovations, records and creative daring, this exciting journey has always been in tune with the times yet firmly focused on the future. The passion, know-how and open-mindedness of the Manufacture's men and women have shaped Vacheron Constantin's identity through a subtle balance between technical skill and artistic sensitivity. These deeply held values echo the Maison's 270-year quest for excellence.





270

ANNIVERSARY

Writing to Jacques Barthélemy Vacheron in 1819, François Constantin asked his partner to 'do better if possible, and that is always possible'. This phrase became the Maison's motto. In 1880, the Maltese cross was chosen as its emblem, becoming a symbol of recognition among watchmakers of the time. Inspired by the watchmaking component of the same name that is a guarantee of timepieces' accuracy and reliability, this symbol has since expressed the messages of quality and durability that Vacheron Constantin watches convey.

Each of the Manufacture's creations has its own technical and stylistic signature, in keeping with the highest standards of fine workmanship and finishing. To celebrate this longevity and perpetuate the brand's constant quest for innovation, a selection of timepieces produced in limited series showcase this expertise through new movements and decor. Once again, the Maltese cross is a source of inspiration and distinction.

270 YEARS
OF DOING BETTER
IF POSSIBLE

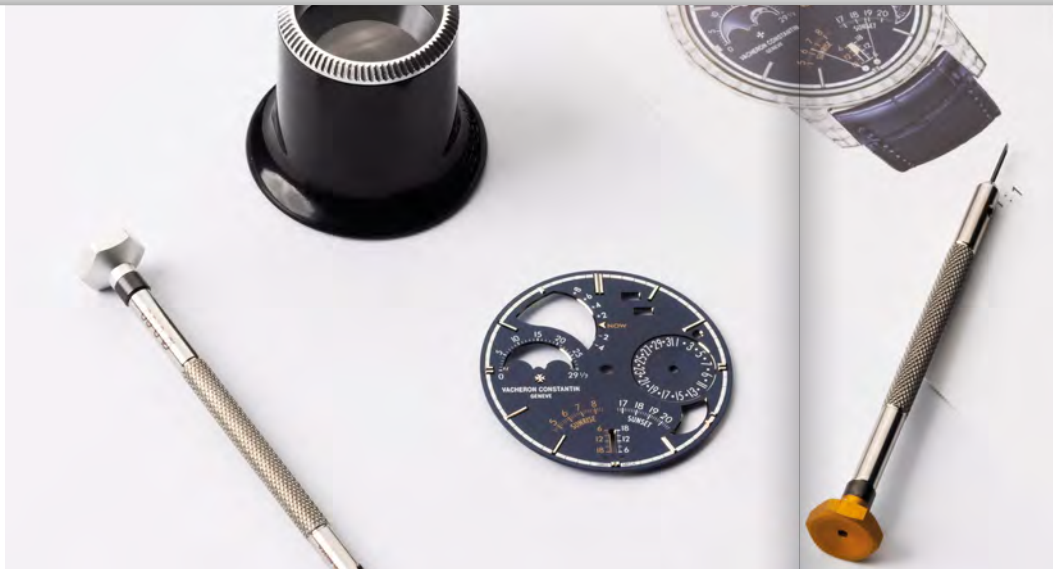
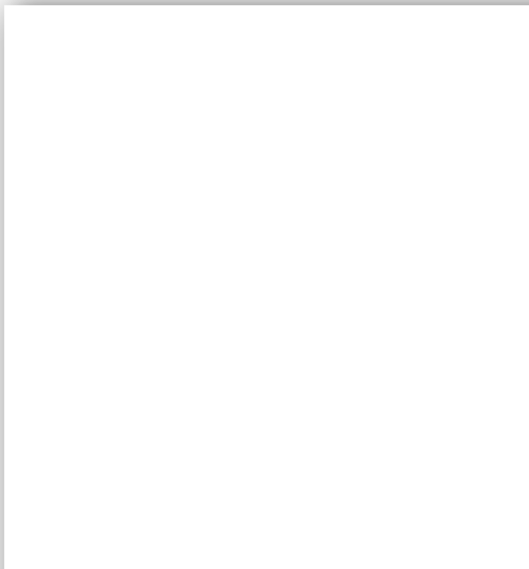
*And That is
always
Possible*



LES CABINOTIERS

Representing a symbol of its longevity, Vacheron Constantin has since the 18th century perpetuated the tradition and spirit of the Cabinotiers, as the most brilliant watchmakers of the time were known. These accomplished men of culture and true scientists worked in the silence of their light-filled workshops, the famous *cabinets* located on the top floors of Geneva's buildings. They were master watchmakers who based their expertise on vast scientific knowledge and infinite curiosity for new ideas, spurred on by the philosophy of the Enlightenment. They produced exceptional timepieces combining rare technical complexity, sophisticated style and artistic crafts, inspired by astronomy, science and art to which they paid tribute.





Today, Vacheron Constantin keeps this Geneva tradition vibrantly alive through its Les Cabinotiers department, dedicated to the creation of single-piece editions. This department offers connoisseurs and enthusiasts the opportunity to own a watch that resembles them, a work of watchmaking art mingling technical innovation and artistic expression – values that remain an ongoing quest for the Maison. Les Cabinotiers can offer original timepieces inspired by the vision of our engineers, designers, watchmakers and artisans, or making the dreams of enlightened collectors come true. Each watch thus becomes a rare object, exuding character and emotion and epitomising Vacheron Constantin's commitment to magnifying the art of the exceptional.





Launched in 2024, Les Cabinotiers - The Berkley Grand Complication and its 63 complications represent a technical feat expressed through elegantly understated, impeccably finished good looks. It took the three watchmakers 11 years of development and incredible ingenuity to achieve this horological marvel. This single-piece edition, the most complicated pocket watch in the world, is the first to offer a traditional Chinese calendar in perpetual mode.



Manual-winding
18K white gold, Ø 98 mm

Single-piece edition

Double-sided pocket watch,
63 complications

9901C-000G-B472
Calibre 3752

THE BERKLEY GRAND COMPLICATION





Representing 270 years of technical and stylistic mastery, while more than ever reflecting its motto 'Do better if possible, and that is always possible', Vacheron Constantin has created the most complicated wristwatch in watchmaking history. This single-piece edition is a feat of miniaturisation housing 41 complications in a case measuring 45 mm in diameter and barely 15 mm thick. It represents the result of eight years of research and development by the Les Cabinotiers department and is the subject of 13 patent applications.



Manual-winding
18K white gold, Ø 45 mm

Single-piece edition

Double-sided timepiece,
41 complications

9600C/000G-231C
Calibre 3655





SOLARIA ULTRA GRAND COMPLICATION



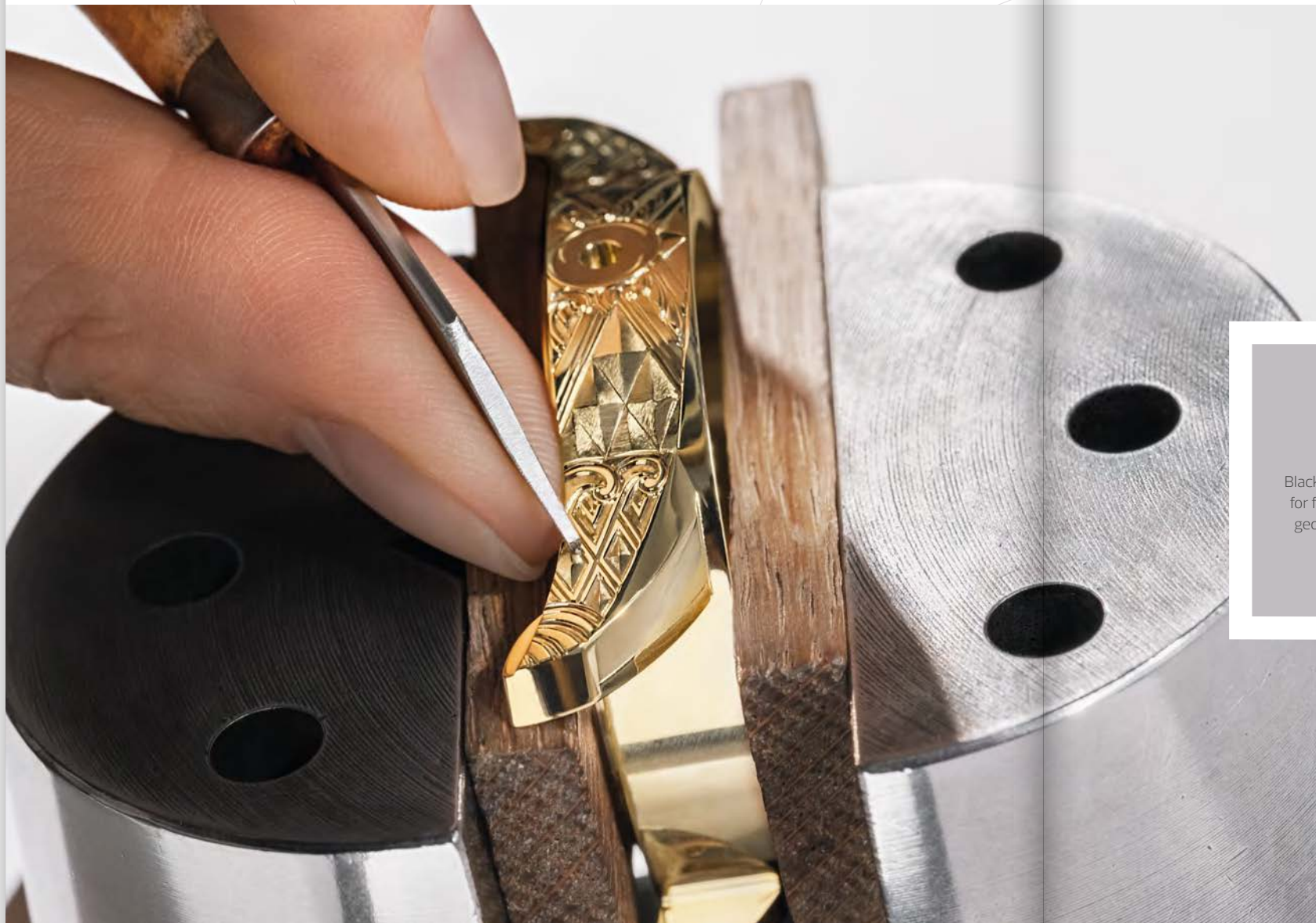
Manual-winding
18K white gold, Ø 46 mm

Single-piece edition

Double-sided timepiece,
11 complications, displaying a satellite
view of the Moon from the
two hemispheres

9770C/000G-007C
Calibre 2755 TMRCC QP





Manual-winding
18K 3N yellow gold, Ø 45 mm

Single-piece edition

Black hand-guilloché radiant pattern
for face bridges and hand-engraved
geometric pattern for back bridges

9860C/000J-090C
Calibre 1990



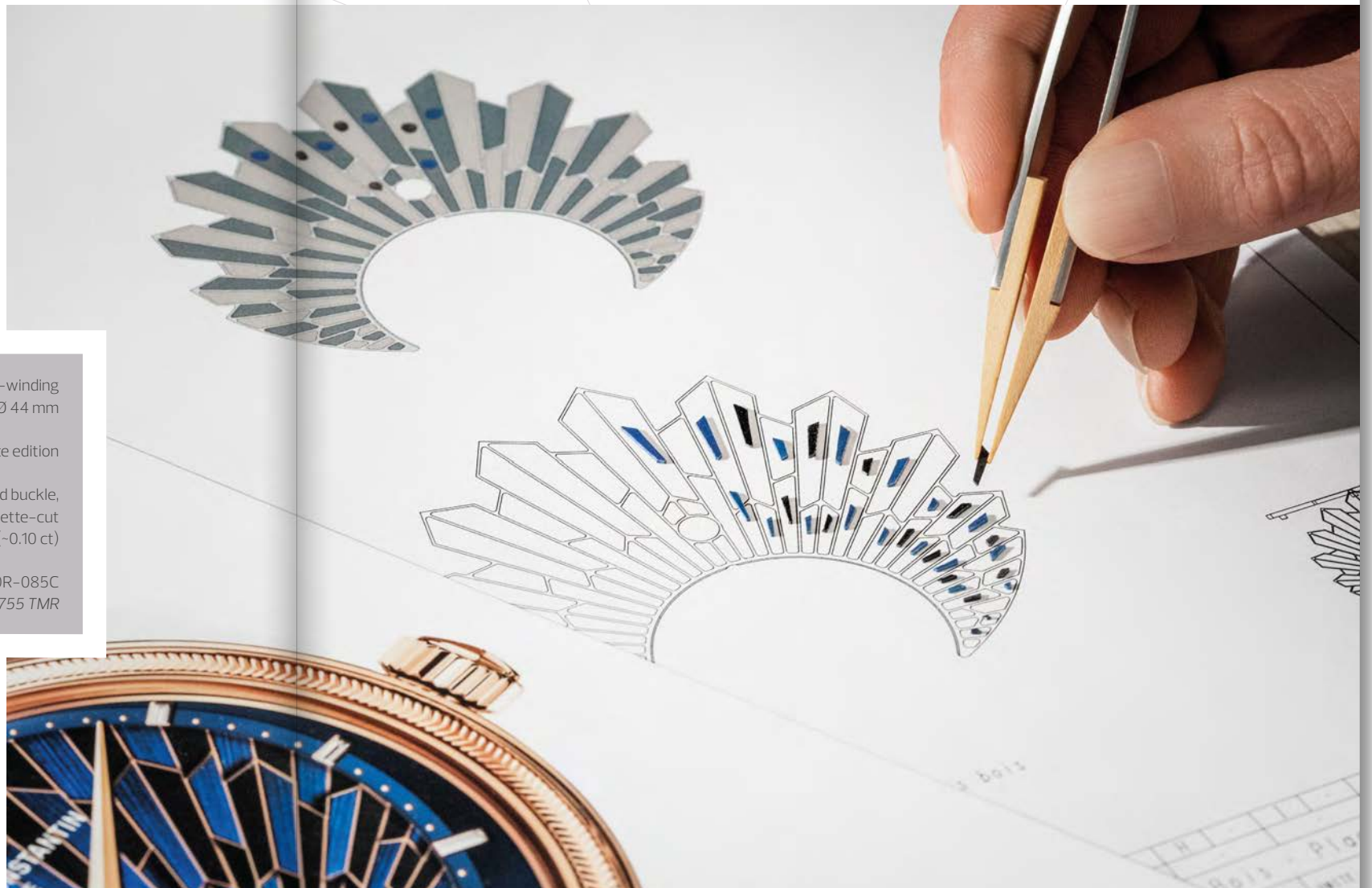


Manual-winding
18K 5N pink gold, Ø 44 mm

Single-piece edition

Hand-engraved case and buckle,
wood marquetry dial, 11 baguette-cut
diamonds for hour-markers (~0.10 ct)

6520C/000R-085C
Calibre 2755 TMR



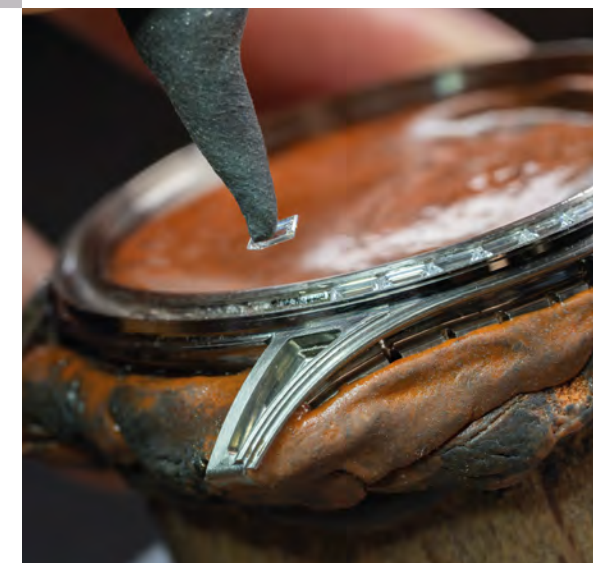


Self-winding
18K white gold, Ø 40 mm

Single-piece edition

Hand-crafted green *grisaille*-enamelled
dial representing a dragon, case fully set
with 146 baguette-cut diamonds (~7.10 cts)

2017C/000G-096C
Calibre 1120





Self-winding
950 platinum, Ø 40 mm

Single-piece edition

Grand Feu miniature enameled dial
depicting the Maison's historical
Tour de l'Île premises in Geneva

2400C/000P-418C
Calibre 2460



Self-winding
950 platinum, Ø 40 mm

Single-piece edition

Hand-guilloché *Grand Feu* miniature
enameled dial depicting the Maison's
historical Tour de l'Île premises in Geneva

2400C/000P-420C
Calibre 2460



Self-winding
18K 5N pink gold, Ø 40 mm

Single-piece edition

Hand-engraved dial with the bas-relief
technique, depicting the Maison's
historical Tour de l'Île premises in Geneva

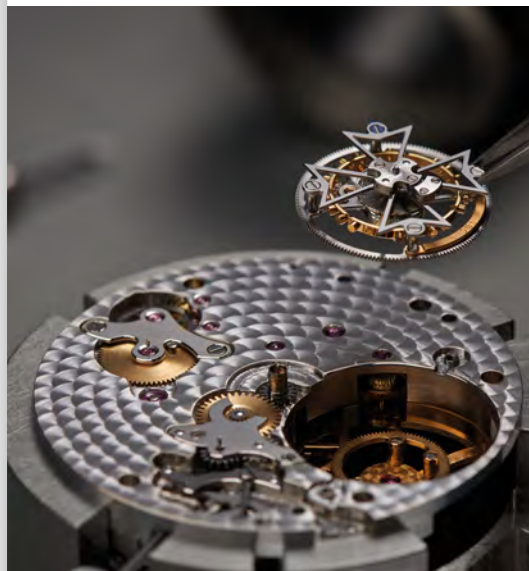
2400C/000R-412C
Calibre 2460

HIGH COMPLICATION

TECHNICAL EXCELLENCE AND EXPERTISE

Vacheron Constantin's supreme technical skill has given rise to traditional complications and original functions. From the tourbillon to the *Grande Sonnerie* and astronomical indications, the creation of Grand Complication watches demands considerable dexterity and expertise; not to mention the high standards of finish and precision that are an integral part of Hallmark of Geneva certification.





TRADITIONNELLE

TRUE ELEGANCE LIES IN THE SUBTLEST DETAILS

The Traditionnelle collection highlights Vacheron Constantin's constant quest for excellence. Technical sophistication expressed through outstanding horological codes, respect for stylistic principles, a subtle sense of proportion: from the simplest to the most complicated, these timepieces pay tribute to the fine craftsmanship and expertise inherited from 18th century High Watchmaking.





The art of *guilloché* is associated with technical accomplishment in a self-winding calibre combining a tourbillon with a perpetual calendar. This limited edition notably features a case and buckle in platinum, a rare and precious metal.



Self-winding
950 platinum, Ø 42 mm

Numbered 127-piece
limited edition

6300T/000P-H056
2162 QP/270





Manual-winding
18K 5N pink gold, Ø 42.5 mm

5100T/000R-B623
Calibre 3200





TRADITIONNELLE
TOURBILLON RETROGRADE DATE OPENFACE



Self-winding
950 platinum, Ø 41 mm

Numbered 370-piece
limited edition

6010T/000P-H055
Calibre 2162 R31/270



Self-winding
18K 5N pink gold, Ø 41 mm

6010T/000R-B638
Calibre 2162 R31



A contemporary design combining a retrograde date display,
the Maison's stylistic signature, along with an openface dial
highlighting the mechanical sophistication of the tourbillon.

TRADITIONNELLE



Self-winding
18K 5N pink gold, Ø 41 mm

6000T/000R-B346
Calibre 2160



TOURBILLON



Self-winding
950 platinum, Ø 41 mm

6000T/000P-H025
Calibre 2160



Self-winding
18K white gold, Ø 41 mm
Set with 334 diamonds (~27.11 ct)
6057T/000G-H067
Calibre 2160





Self-winding
18K white gold, Ø 39 mm

Set with 559 diamonds (~6.59 ct)
Delivered with 2 straps
(satin and leather)

6025T/000G-B635
Calibre 2160



Self-winding
18K 5N pink gold, Ø 39 mm

Set with 291 diamonds (~3.57 ct)
Delivered with 2 straps
(satin and leather)

6035T/000R-B634
Calibre 2160



TRADITIONNELLE
PERPETUAL CALENDAR CHRONOGRAPH

Manual-winding
950 platinum, Ø 43 mm

5000T/000P-B975
Calibre 1142 QP





Self-winding
18K 5N pink gold, Ø 36.5 mm

Set with 94 diamonds (~1.20 ct)

4305T/000R-B947
Calibre 1120 QP



TRADITIONNELLE



This perpetual calendar with retrograde date display brings unprecedented transparency to the art of showing the complexity of calculating time. The 'côte unique' motif on the back of the calibre, a nod to the Maison's 270th anniversary, contributes to the sophistication of this new movement.

PERPETUAL CALENDAR RETROGRADE DATE OPENFACE



Self-winding
950 platinum, Ø 41 mm

Numbered 370-piece
limited edition

4030T/000P-H054
Calibre 2460 QP R31/270



TRADITIONNELLE
COMPLETE CALENDAR OPENFACE



Self-winding
950 platinum, Ø 41 mm

Numbered 370-piece
limited edition

4020T/000P-H038
Calibre 2460 QCL/270



TRADITIONNELLE



Self-winding
18K white gold, Ø 41 mm

4020T/000G-B655
Calibre 2460 QCL



COMPLETE CALENDAR OPENFACE



Self-winding
18K 5N pink gold, Ø 41 mm

4020T/000R-B654
Calibre 2460 QCL



Self-winding
18K 5N pink gold, Ø 41 mm
4010T/000R-B344
Calibre 2460 QCL



Self-winding
18K white gold, Ø 41 mm
4010T/000G-B740
Calibre 2460 QCL





18K 5N pink gold, Ø 38 mm

82172/000R-9382
Calibre 4400 AS



18K 5N pink gold, Ø 38 mm

82172/000R-H008
Calibre 4400 AS





950 platinum, Ø 38 mm

Numbered 370-piece
limited edition

82172/000P-H062
Calibre 4400 AS/270



18K 5N pink gold, Ø 38 mm

Numbered 370-piece
limited edition

82172/000R-H118
Calibre 4400 AS/270





Manual-winding
18K white gold, Ø 37.5 mm

Set with 795 diamonds (~4.8 ct)

7006T/000G-B913
Calibre 1410 AS





Manual-winding
18K white gold, Ø 36 mm

Set with 81 diamonds (~1.28 ct)

83570/000G-9916
Calibre 1410 AS



Manual-winding
18K 5N pink gold, Ø 36 mm

Set with 81 diamonds (~1.28 ct)

83570/000R-9915
Calibre 1410 AS





18K 5N pink gold, Ø 36 mm
Set with 81 diamonds (~1.28 ct)
Numbered 270-piece
limited edition
83570/000R-H060
Calibre 1410 AS/270



18K 5N pink gold, Ø 33 mm
Set with 54 diamonds (~0.87 ct)
Numbered 270-piece
limited edition
1405T/000R-H061
Calibre 1440/270





18K 5N pink gold, Ø 33 mm
Set with 54 diamonds (~0.87 ct)
1405T/000R-H009
Calibre 1440

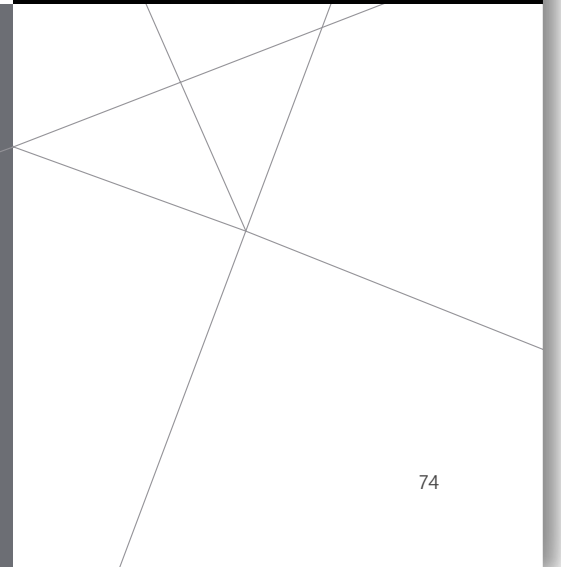
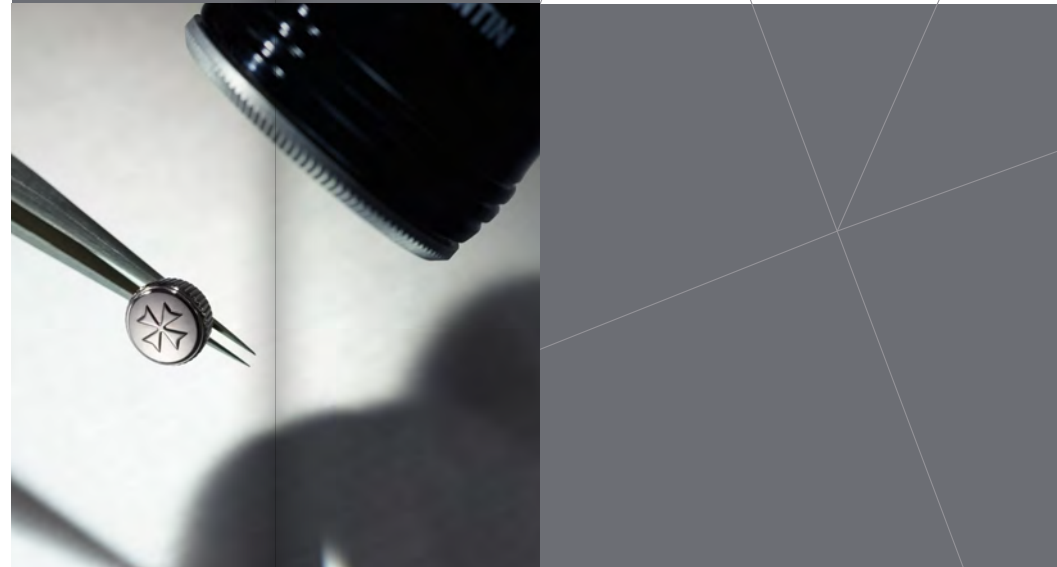
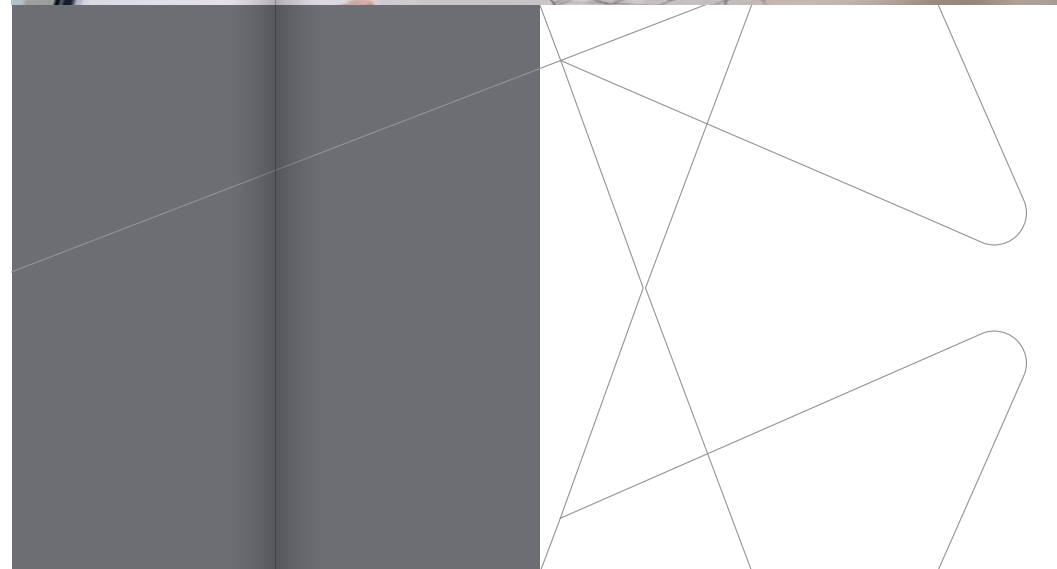
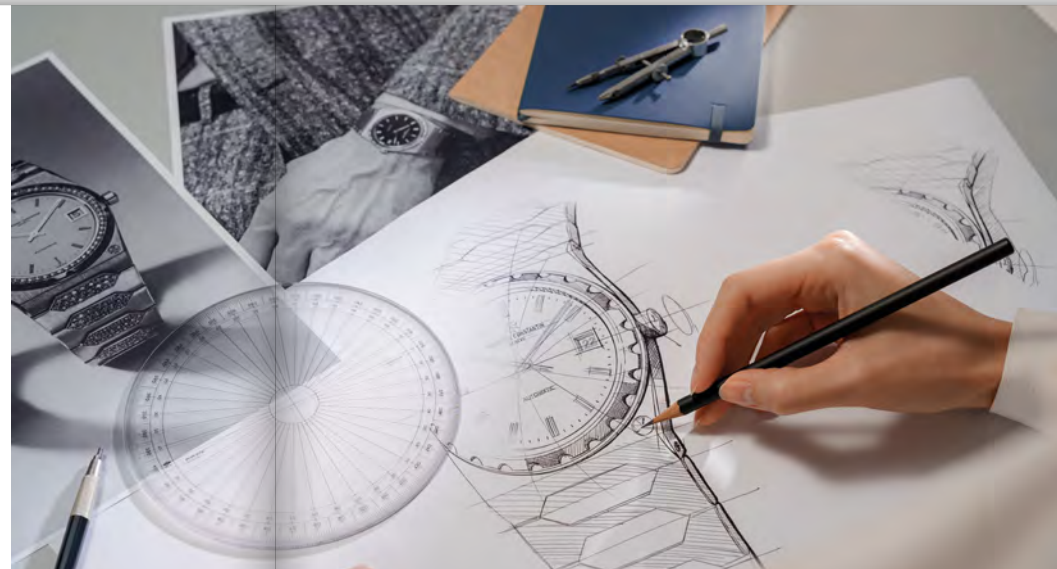


18K 5N pink gold, Ø 33 mm
Set with 54 diamonds (~0.87 ct)
1405T/000R-B636
Calibre 1440



REMAINING ROOTED IN THE MAISON'S DNA

The challenge taken up by Vacheron Constantin's designers lies in constantly creating and innovating while respecting the Maison's heritage. The timeless design of its watches involves cultivating a look that symbolises traditional watchmaking, while also and above all blending modernity, daring and discreet sophistication. The special care lavished on every visual detail is not an optional extra but an absolute necessity.





PATRIMONY

AN ODE TO SIMPLICITY

These few words perfectly sum up the Patrimony collection. Reflecting a minimalist approach mingling taut lines and curves, these beautifully slender watches exude contemporary charm thanks to their domed dials, slim hands and circular-grained minutes track. The epitome of elegance, understatement and uniqueness.





Self-winding
18K white gold, Ø 42.5 mm

Numbered 270-piece
limited edition

4010U/000G-H057
Calibre 2460 R31L/270



Self-winding
18K 5N pink gold, Ø 42.5 mm

Numbered 270-piece
limited edition

4010U/000R-H117
Calibre 2460 R31L/270



Combined with the moon-phase indication at 6 o'clock, the retrograde pointer-type date display gives these limited editions a style that is both classic and modern. Each one features a style signature on the dial as well as a 'côte unique' motif on the movement echoing Vacheron Constantin's 270th anniversary.



Self-winding
18K 5N pink gold, Ø 42.5 mm
4010U/000R-B329
Calibre 2460 R31L



Self-winding
18K white gold, Ø 42.5 mm
4010U/000G-H070
Calibre 2460 R31L



Self-winding
950 platinum, Ø 42.5 mm

4000U/000P-H003
Calibre 2460 R31R7



Self-winding
18K 5N pink gold, Ø 42.5 mm

4000U/000R-B110
Calibre 2460 R31R7



PATRIMONY
SELF-WINDING





18K white gold, Ø 40 mm

Numbered 370-piece
limited edition

85180/000G-H035
Calibre 2450 Q6/270



18K 5N pink gold, Ø 40 mm

Numbered 370-piece
limited edition

85180/000R-H116
Calibre 2450 Q6/270



Powered by a self-winding calibre, these timelessly stylish limited-edition timepieces feature a finely decorated dial with a motif inspired by the Maison's Maltese cross emblem. The understated elegance of the dial provides a unique surface for expression and strongly contrasting light effects.



18K 5N pink gold, Ø 40 mm
85180/000R-9248
Calibre 2450 Q6



18K white gold, Ø 40 mm
85180/000G-9230
Calibre 2450 Q6





18K white gold, Ø 39 mm
1410U/000G-H017
Calibre 1440



18K 5N pink gold, Ø 39 mm
1410U/000R-H018
Calibre 1440



18K white gold, Ø 37 mm
Set with 769 diamonds (~5.81 ct)
4116U/000G-B909
Calibre 2460 SC



PATRIMONY



18K 5N pink gold, Ø 36.5 mm

Set with 72 diamonds (~0.74 ct)

4115U/000R-B907
Calibre 2450 Q6



18K 5N pink gold, Ø 36.5 mm

Set with 48 diamonds (~0.13 ct)

4110U/000R-B905
Calibre 2450 Q6



SELF-WINDING





OVERSEAS

DRIVEN BY THE SPIRIT OF TRAVEL AND OPENNESS
TO THE WORLD

The Maison's age-old values live on while capturing the spirit of the times in the Overseas collection. Radiating contemporary casual elegance, these wristwatches also feature the major traditional complications: openworked movement, tourbillon and perpetual calendar. Equipped with a patented interchangeable strap system, they are the perfect daily companions for both exceptional and everyday travels.





Self-winding
18K 5N pink gold, Ø 42.5 mm

Delivered with 3 interchangeable straps
(18K 5N pink gold, leather and rubber)

6000V/210R-B934
Calibre 2160 SQ



Self-winding
Titanium, Ø 42.5 mm

Delivered with 3 interchangeable straps
(titanium, leather and rubber)

6000V/210T-B935
Calibre 2160 SQ





Self-winding
18K white gold, Ø 42.5 mm

Set with 85 diamonds (~3.65 ct)
Delivered with 3 interchangeable straps
(18K white gold, leather and rubber)

6007V/210G-B955
Calibre 2160





Self-winding
18K 5N pink gold, Ø 42.5 mm
Delivered with 3 interchangeable straps
(18K 5N pink gold, leather and rubber)
6000V/210R-B733
Calibre 2160



Self-winding
Titanium, Ø 42.5 mm
Delivered with 3 interchangeable straps
(titanium, leather and rubber)
6000V/210T-H032
Calibre 2160



Self-winding
18K 5N pink gold, Ø 41.5 mm

Delivered with 3 interchangeable straps
(18K 5N pink gold, leather and rubber)

4300V/220R-B642
Calibre 1120 QPSQ



Self-winding
18K 5N pink gold, Ø 41.5 mm

Delivered with 3 interchangeable straps
(18K 5N pink gold, leather and rubber)

4300V/220R-B547
Calibre 1120 QPSQ





OVERSEAS
PERPETUAL CALENDAR SKELETON ULTRA-THIN

Self-winding
18K white gold, Ø 41.5 mm

Delivered with 3 interchangeable straps
(18K white gold, leather and rubber)

4300V/220G-B946
Calibre 1120 QPSQ



Self-winding
18K white gold, Ø 41.5 mm

Delivered with 3 interchangeable straps
(18K white gold, leather and rubber)

4300V/220G-B945
Calibre 1120 QP



Self-winding
18K 5N pink gold, Ø 41.5 mm

Delivered with 3 interchangeable straps
(18K 5N pink gold, leather and rubber)

4300V/220R-B509
Calibre 1120 QP



Self-winding
18K 5N pink gold, Ø 41.5 mm

Delivered with 3 interchangeable straps
(18K 5N pink gold, leather and rubber)

4300V/220R-B064
Calibre 1120 QP



Self-winding
Stainless steel, Ø 41 mm

Delivered with 3 interchangeable straps
(stainless steel, leather and rubber)

4000V/210A-B911
Calibre 2460 R31L





Self-winding
18K 5N pink gold, Ø 42.5 mm

Delivered with 3 interchangeable straps
(18K 5N pink gold, leather and rubber)

5520V/210R-B966
Calibre 5200



Self-winding
18K 5N pink gold, Ø 42.5 mm

Delivered with 3 interchangeable straps
(18K 5N pink gold, leather and rubber)

5520V/210R-B952
Calibre 5200



Self-winding
Stainless steel, Ø 42.5 mm

Delivered with 3 interchangeable straps
(stainless steel, leather and rubber)

5520V/210A-B148
Calibre 5200



Self-winding
Stainless steel, Ø 42.5 mm

Delivered with 3 interchangeable straps
(stainless steel, leather and rubber)

5520V/210A-B686
Calibre 5200



Self-winding
Stainless steel, Ø 42.5 mm

Delivered with 3 interchangeable straps
(stainless steel, leather and rubber)

5520V/210A-B481
Calibre 5200

OVERSEAS
DUAL TIME

Self-winding
18K 5N pink gold, Ø 41 mm

Delivered with 3 interchangeable straps
(18K 5N pink gold, leather and rubber)

7920V / 210R-B965
Calibre 5110 DT





Self-winding
Stainless steel, Ø 41mm

Delivered with 3 interchangeable straps
(stainless steel, leather and rubber)

7920V/210A-B546
Calibre 5110 DT



Self-winding
Stainless steel, Ø 41mm

Delivered with 3 interchangeable straps
(stainless steel, leather and rubber)

7920V/210A-B334
Calibre 5110 DT



18K 5N pink gold, Ø 41 mm

Delivered with 3 interchangeable straps
(18K 5N pink gold, leather and rubber)

4520V/210R-B705
Calibre 5100



18K 5N pink gold, Ø 41 mm

Delivered with 3 interchangeable straps
(18K 5N pink gold, leather and rubber)

4520V/210R-B967
Calibre 5100



OVERSEAS
SELF-WINDING





Stainless steel, Ø 41 mm

Delivered with 3 interchangeable straps
(stainless steel, leather and rubber)

4520V/210A-B128
Calibre 5100



Stainless steel, Ø 41 mm

Delivered with 3 interchangeable straps
(stainless steel, leather and rubber)

4520V/210A-B483
Calibre 5100





18K 5N pink gold, Ø 35 mm

Set with 90 diamonds (~0.86 ct)
Delivered with 3 interchangeable straps
(18K 5N pink gold, leather and rubber)

4605V/200R-B968
Calibre 1088



Stainless steel, Ø 35 mm

Set with 90 diamonds (~0.86 ct)
Delivered with 3 interchangeable straps
(stainless steel, leather and rubber)

4605V/200A-B971
Calibre 1088



18K 5N pink gold, Ø 35 mm

Set with 90 diamonds (~0.86 ct)
Delivered with 3 interchangeable straps
(18K 5N pink gold, leather and rubber)

4605V/200R-B978
Calibre 1088



Stainless steel, Ø 34.5 mm

Delivered with 3 interchangeable straps
(stainless steel, leather and rubber)

4600V/200A-B980
Calibre 1088



18K 5N pink gold, Ø 34.5 mm

Delivered with 3 interchangeable straps
(18K 5N pink gold, leather and rubber)

4600V/200R-H134
Calibre 1088





18K 5N pink gold, Ø 33 mm

Set with 78 diamonds (~0.80 ct)
Delivered with 3 interchangeable straps
(18K 5N pink gold, leather and rubber)

1225V/200R-H015
Calibre 1207 AS



18K 5N pink gold, Ø 33 mm

Set with 78 diamonds (~0.80 ct)
Delivered with 3 interchangeable straps
(18K 5N pink gold, leather and rubber)

1225V/200R-H031
Calibre 1207 AS



Stainless steel, Ø 33 mm

Set with 78 diamonds (~0.80 ct)
Delivered with 3 interchangeable straps
(stainless steel, leather and rubber)

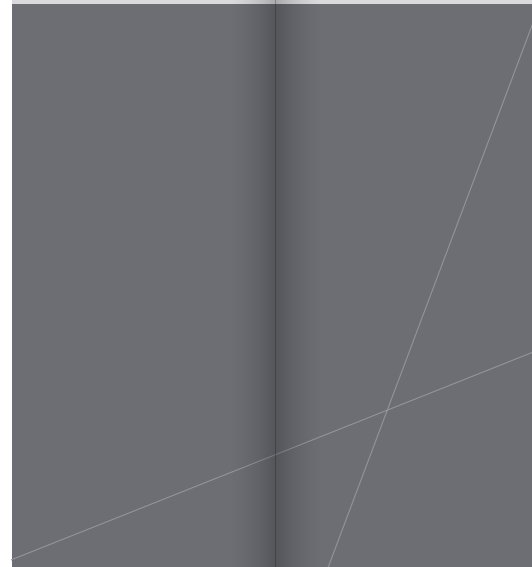
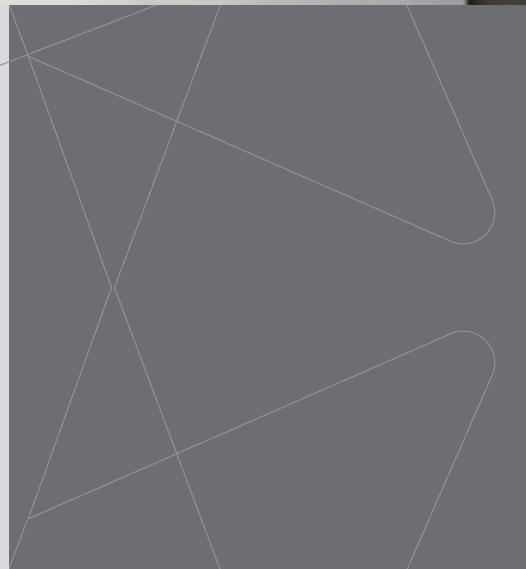
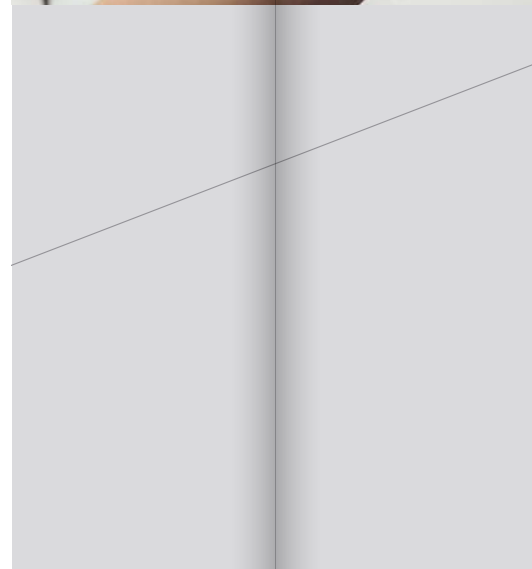
1225V/200A-B590
Calibre 1207 AS



VIRTUOSITY

UPHOLDING A SINGULAR SPIRIT

Vacheron Constantin collaborates with talented individuals whose personality, spirit of innovation, creativity and work express openness to the world. These human and artistic encounters follow naturally in the wake of those that have studied the history of the Maison. Within the Manufacture, excellence has always consisted in the art of perfectly orchestrating all these talents. Expertise is a form of elegance that is made to be shared.





ÉGÉRIE

VACHERON CONSTANTIN'S HOROLOGICAL MUSE

The Égérie collection deftly weaves an encounter between Haute Horlogerie and Haute Couture. Faithful to Vacheron Constantin's heritage, these watches with their sophisticated refined style and 2 o'clock crown combine asymmetry with watchmaking tradition. The pleated effects of the tapestry-patterned dials are reminiscent of a precious fabric exuding mischief and elegance.





Self-winding
18K white gold, Ø 37 mm

Set with 1377 diamonds (~12.35 ct)

8016F/127G-B499
Calibre 1088 L



Self-winding
18K white gold, Ø 37 mm

Set with 845 diamonds (~5.46 ct)
Delivered with 2 interchangeable straps
(satin and leather)

8006F/000G-B499
Calibre 1088 L

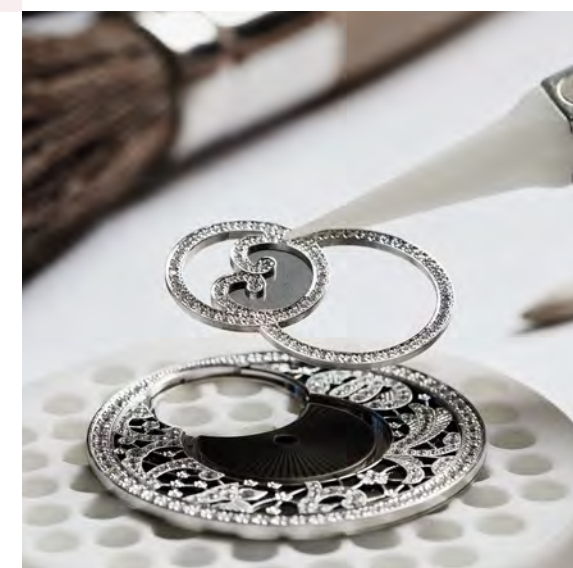




Self-winding
18K white gold, Ø 37 mm

Set with 585 diamonds (~4.46 ct)
Delivered with 2 interchangeable
leather straps

8006F/000G-B942
Calibre 1088 L





Self-winding
18K 5N pink gold, Ø 37 mm

Set with 94 diamonds (~1.13 ct)
Delivered with 3 interchangeable
leather straps

8005F/000R-B498
Calibre 1088 L



Self-winding
18K 5N pink gold, Ø 37 mm

Set with 94 diamonds (~1.13 ct)

8005F/120R-H002
Calibre 1088 L

ÉGÉRIE
MOON PHASE

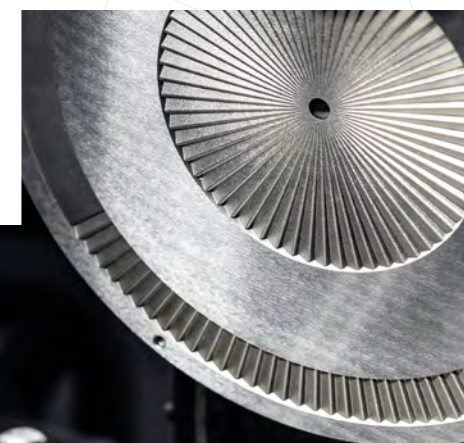




18K 5N pink gold, Ø 35 mm
Set with 92 diamonds (~0.96 ct)
4605F/110R-B496
Calibre 1088



18K 5N pink gold, Ø 35 mm
Set with 92 diamonds (~0.96 ct)
Delivered with 3 interchangeable
leather straps
4605F/000R-B496
Calibre 1088





FIFTYSIX

UNDERSTATEMENT IS THE ULTIMATE REFINEMENT

Symbols of an elegant retro-contemporary combination, the timepieces in the Fiftysix collection are inspired by a Vacheron Constantin watch dating from the 1950s. They feature a specific case shape and a highly legible dial providing a meticulous, harmonious display of the various complications.





Self-winding
18K 5N pink gold, Ø 40 mm

4000E/000R-B438
Calibre 2460 QCL





Self-winding
18K 5N pink gold, Ø 40 mm
4400E/000R-B436
Calibre 2475 SC





FIFTYSIX
SELF-WINDING

FIFTYSIX



SELF-WINDING



18K 5N pink gold, Ø 40 mm

4600E/000R-B441
Calibre 1326



18K 5N pink gold, Ø 40 mm

4600E/000R-H101
Calibre 1326



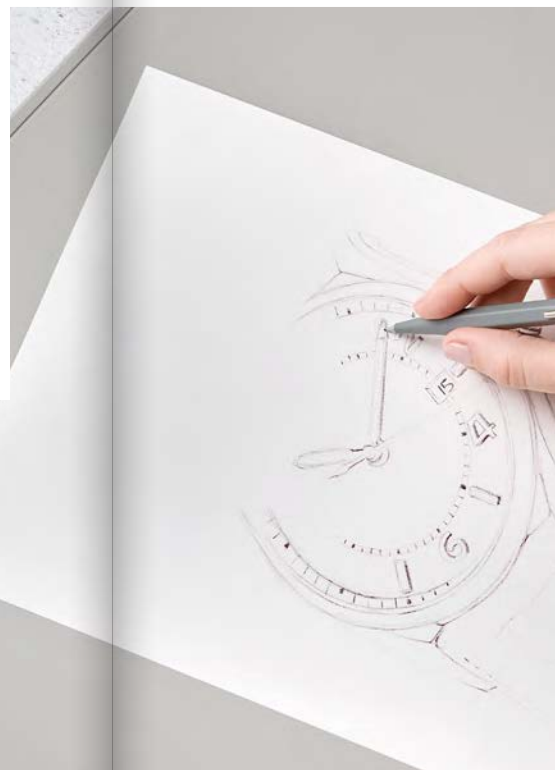
Stainless steel, Ø 40 mm

4600E/110A-B487
Calibre 1326



Stainless steel, Ø 40 mm

4600E/000A-B487
Calibre 1326





Stainless steel, Ø 40 mm

4600E/000A-B442
Calibre 1326





HISTORIQUES

THE PAST INSPIRES THE PRESENT AND GUIDES
THE FUTURE

In tribute to its creativity, Vacheron Constantin regularly reissues the most outstanding pieces from its heritage, as was the case with the American 21 from the Roaring Twenties and the 222 designed by Jorg Hysek. Creations from all eras are revived today, respecting the stylistic codes of bygone times – cow horns, original dials, distinctive signatures – while meeting present standards and driven as always by the Maison's quest for excellence and timelessness.





Self-winding
Stainless steel, Ø 37 mm

4200H/222A-B934
Calibre 2455



Self-winding
18K 3N yellow gold, Ø 37 mm

4200H/222J-B935
Calibre 2455







Manual-winding
18K 4N pink gold, Ø 38.5 mm

5000H/000R-B059
Calibre 1142



Manual-winding
Stainless steel, Ø 38.5 mm

5000H/000A-B582
Calibre 1142





HISTORIQUES
CORNES DE VACHE 1955



Manual-winding
18K white gold, Ø 40 mm

82035/000G-B735
Calibre 4400 AS



Manual-winding
18K white gold, Ø 36.5 mm

Delivered with 2 leather straps
1100S/000G-B734
Calibre 4400 AS





Manual-winding
18K 5N pink gold, Ø 40 mm

82035/000R-9359
Calibre 4400 AS



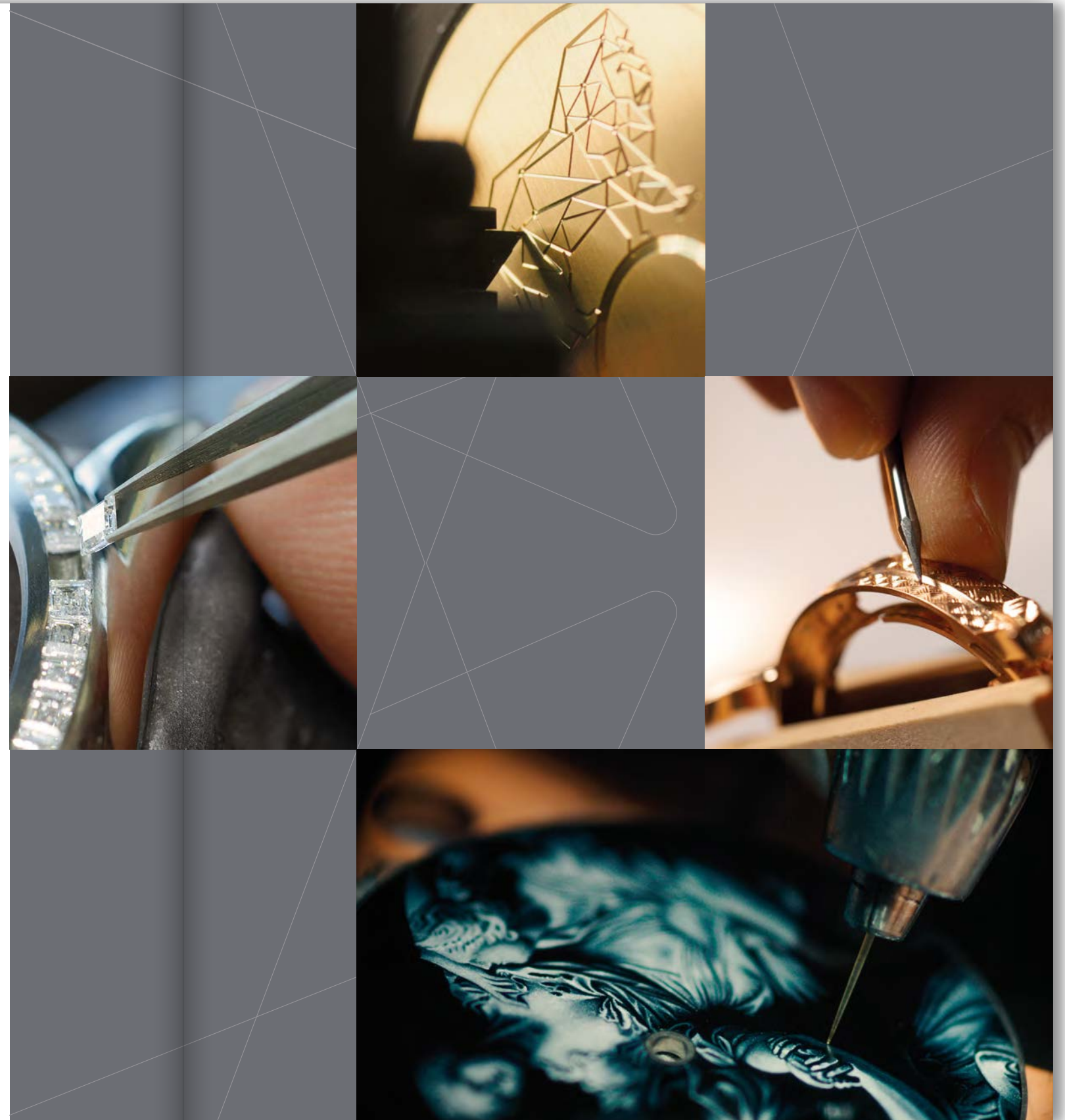
Manual-winding
18K 5N pink gold, Ø 36.5 mm

Delivered with 2 leather straps

1100S/000R-B430
Calibre 4400 AS

PERPETUATING AND EVOLVING THE MAISON'S KNOW-HOW

The Maison's stylistic identity defines its personality and guides its fundamental choices based on three unbending desires: purity, sophistication and elegance. These values are expressed in a more ornamental way through its expertise in decorative art techniques and artistic crafts such as gemsetting, engraving, *guilloché* work and enamelling. All decorations are applied by hand, using a multitude of tools designed by the artisans themselves or on complex ancient machines that they continue to maintain in operation. True to its humanist values, the Maison develops and keep these rare skills vibrantly alive. Since its founding in 1755, Vacheron Constantin has promoted, modernised and perpetuated these age-old crafts, encouraging an uninterrupted tradition of innovation.





MÉTIER D'ART

A WINDOW ON THE WORLD

Celebrating decorative techniques applied to watchmaking and jewellery, the watches in the Métiers d'Art collection are inspired by History and Culture. Hand-crafted by the Master Artisans of the Manufacture, these horological works of art reflect the creativity and expertise passed down through successive generations. Precious stones, *Grand Feu* or *plique-à-jour* enamel, gold sculptures and engravings as well as miniature paintings all express an imaginary world faithfully perpetuated by Vacheron Constantin.





Year of the Snake

Self-winding
950 platinum, Ø 40 mm

Numbered 25-piece limited edition

86073/000P-H033
Calibre 2460 G4



Year of the Snake

Self-winding
18K 5N pink gold, Ø 40 mm

Numbered 25-piece limited edition

86073/000R-H034
Calibre 2460 G4



Brought to life by a combination of engraving and miniature enamelling, the sinuous body of a snake – a mysterious animal symbolising wisdom – is coiled on top of a rock. The final texture stems from the work of the Master Engraver, who has expertly carved the precious pink or white gold from which the reptile is fashioned. Vacheron Constantin has chosen two techniques to create this decoration. The first is *Grand Feu* enamel for the dial background, while the second is the ancient Genevan technique of flux-coated miniature opaque enamel used for the flora.



Moonlight slivers

Self-winding
18K 5N pink gold, Ø 38 mm

Set with 313 diamonds (~0.9 ct)
Numbered 15-piece limited edition

2405A/000R-H022
Calibre 2460



Moonlight slivers

Self-winding
18K white gold, Ø 38 mm

Set with 313 diamonds (~0.9 ct)
Numbered 15-piece limited edition

2405A/000G-H021
Calibre 2460

On this version, the gold dial is divided into three parts. The first is made of deep blue *Grand Feu* enamel applied in successive kiln-fired layers, engraved to create volutes and give depth to the background. The second is reserved for waves daintily set with brilliant-cut diamonds, evoking shards of moonlight. The third part brings the mountain range to life, crafted using the drypoint technique and enhanced with tone-on-tone *champlevé* enamel inlays.





Eternal flow

Self-winding
18K white gold, Ø 38 mm

Numbered 15-piece limited edition

2400A/000G-H023
Calibre 2460



Eternal flow

Self-winding
18K 5N pink gold, Ø 38 mm

Numbered 15-piece limited edition

2400A/000R-H024
Calibre 2460



Overlooked by a star-studded night sky, tides lap gently against mountain peaks fringed with vegetation. This colourful depiction is a masterpiece of *cloisonné* enamelling, which originated in China. Also known as *Jingtai Blue*, this technique was very popular in the era of Emperor Jingtai of the Ming dynasty. It was a natural choice because of the flexibility it offers in terms of both the choice of colours and the graphic design of the intricate shapes.



HEURES CRÉATIVES

SPARKS OF CREATIVITY

Feminine, timeless lines are the living soul of the Heures Créatives collection which engages in a dialogue with three artistic periods: Art Nouveau, Art Deco and the 1970s. The watches composing this collection bring a magical touch to the wrist. From the brilliance of precious stones to their elegant shapes, they epitomise the unfailing blend of style and grace so typical of the Maison's Jewellery expertise.



HEURES CRÉATIVES
GRAND LADY KALLA





Quartz
18K white gold,
Ø 19.4 x 30.1 mm watch element
Ø 16.8 x 30.1 mm jewel element

Set with 272 diamonds (~45,66 ct)
4 self-interchangeable elements: watch,
jewel, bracelet and tassel

1208J/118G-H094
Calibre 1212



Accompanied by an interchangeable watch and sautoir necklaces, this timepiece offers four different modes of wear, enabling owners to switch them from wrist to neckline and vice versa. The stunning gemsetting intensifies the purity of the emerald-cut diamonds, meticulously selected by the Maison's gemmologists and featuring an over 2ct GIA-certified centre stone.



LES COLLECTIONNEURS & RESTORATION SERVICE

The careful attention paid to the Maison's watchmaking history has long united collectors and connoisseurs of antique timepieces in honouring Vacheron Constantin's centuries-old heritage. Les Collectionneurs is a range born of this shared spirit. This constantly renewed, carefully curated selection of rare vintage timepieces is made up of watches that have been chosen, identified, acquired, restored and certified by our Heritage department experts. They are then offered in Vacheron Constantin boutiques, accompanied by a guarantee and a digital passport complete with a certificate of authenticity.





THE ART OF RESTORATION

Vacheron Constantin is committed to guaranteeing the authenticity and longevity of every watch that has ever left its workshops. Dedicated teams are responsible for identifying and certifying, maintaining, repairing and even restoring the watches entrusted to them, combining a historian's approach with scientific analysis. Since its founding in 1755, restoration and the resulting expertise have been an extension of Vacheron Constantin's quest for excellence, an immutable value that does much to explain its longevity.







CALIBRES & COMPLICATIONS

THE ART OF MOVEMENT AND FINE WORKMANSHIP

Comprehensive mastery of traditional complications includes a range of expertise that few Manufactures still possess. Spurred on by 270 years of history as well as the high demands of discerning customers, the Maison constantly rises to new mechanical challenges through numerous innovative and creative technical developments. Watchmakers, polishers, technical decorators... A broad range of crafts exercised under one roof have jointly contributed to this uninterrupted quest for excellence since its founding. These talents are expressed both through movements' technical sophistication and in the care lavished on their looks. Finishes such as mirror polishing, bevelling and circular graining – which also guarantee precision and reliability – ensure that the Manufacture's calibres are endowed with durability worthy of the Maison's history.

Since 1901, Vacheron Constantin has also been a faithful representative of the Hallmark of Geneva, one of the oldest and most demanding High Watchmaking certifications. Governed by a law promulgated by the Canton of Geneva, it is awarded by an independent official body according to strict criteria relating to both case and movement components as well as the watch's performance. It singles out exceptional timepieces designed and assembled in Geneva.



TOURBILLON PERPETUAL CALENDAR



2162 QP/270

Self-winding

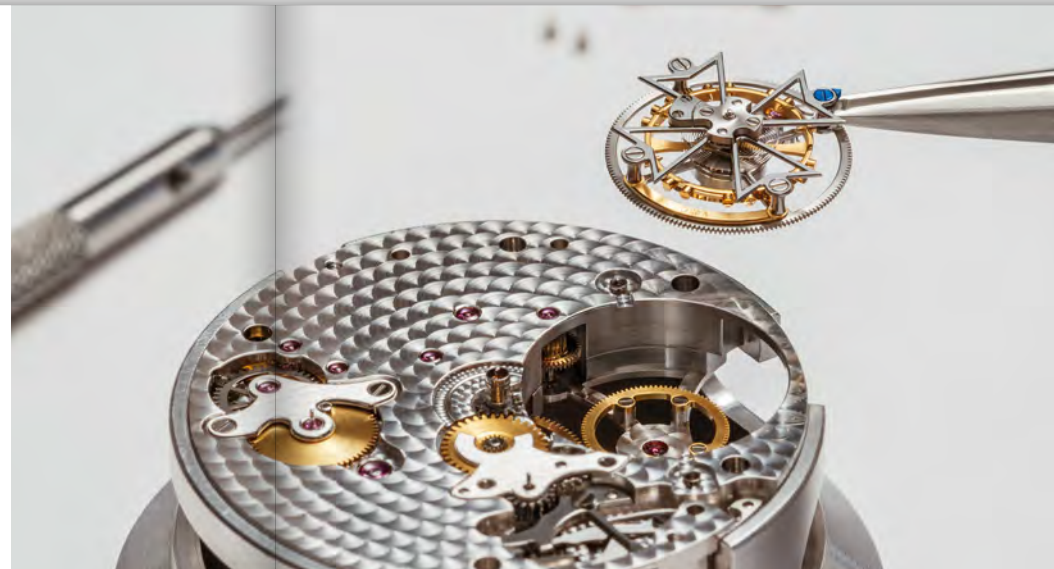
Tourbillon perpetual calendar

72-hour power-reserve
Ø 32.8 mm



TOURBILLON

TOURBILLON CHRONOGRAPH



2160

Self-winding

Peripheral rotor
Tourbillon

80-hour power-reserve
Ø 31 mm

*One of the thinnest self-winding
tourbillon calibres on the market
(5.65 mm)*



3200

Manual-winding

Tourbillon, column-wheel
chronograph, power-reserve
indicator

65-hour power-reserve
Ø 32.8 mm

2160 SQ

Self-winding

Skeletonised, peripheral rotor
Tourbillon

80-hour power-reserve
Ø 31 mm

*One of the thinnest self-winding
tourbillon calibres on the market
(5.65 mm)*



PERPETUAL CALENDAR CHRONOGRAPH



PERPETUAL CALENDAR



1142 QP
Manual-winding
Perpetual calendar, column-wheel
chronograph, moon phase
48-hour power-reserve
Ø 27.5 mm



1120 QP
Self-winding
Perpetual calendar, moon phase
40-hour power-reserve
Ø 29.6 mm
One of the thinnest self-winding
perpetual calendar calibres
on the market (4.05 mm)



1120 QPSQ
Self-winding
Skeletonised, perpetual calendar,
moon phase
40-hour power-reserve
Ø 29.6 mm
One of the thinnest self-winding
perpetual calendar calibres
on the market (4.05 mm)





RETROGRADE DISPLAY



2162 R31/270

Self-winding

Tourbillon, retrograde date

72-hour power-reserve
Ø 31 mm



2460 R31R7

Self-winding

Retrograde day of the week
and date

40-hour power-reserve
Ø 27.2 mm

2460 QP R31/270

Self-winding

Perpetual calendar, retrograde
date, precision moon phase

40-hour power-reserve
Ø 29 mm



2460 R31L

Self-winding

Retrograde day of the week,
precision moon phase

40-hour power-reserve
Ø 27.2 mm



DUAL TIME

CHRONOGRAPH



5110 DT
Self-winding
Dual time and AM/PM indication
60-hour power-reserve
30.6 mm



5200
Self-winding
Column-wheel chronograph
52-hour power-reserve
Ø 30.6 mm



1142
Manual-winding
Column-wheel chronograph
48-hour power reserve
Ø 27.5 mm



COMPLETE CALENDAR

MOONPHASE



2460 QCL

Self-winding

Complete calendar,
precision moon phase

40-hour power-reserve
Ø 29 mm



1410 AS

Manual-winding

Precision moon phase,
power-reserve indicator

38-hour power-reserve
Ø 26 mm



SPECIAL DISPLAYS

2460 G4

Self-winding

Special apertures displaying the hours,
minutes, day of the week and date

40-hour power-reserve
Ø 31mm

SELF-WINDING



MANUAL-WINDING



2450 Q6/270

Self-winding

Date, central seconds

40-hour power-reserve
Ø 26.2 mm



4400 AS/270

Manual-winding

Small seconds

65-hour power-reserve
Ø 28.6 mm



Beautifully exposed through openworked dials and sapphire crystal casebacks, the 270th anniversary calibres reveal the care bestowed on details and especially the 'côte unique' motif adorning the bridges. Used by Vacheron Constantin over a hundred years ago, this technique was rediscovered in 2021 while carefully reproducing the Historiques American 1921 watch. The process took over 500 hours to perfect, reflecting the Maison's dedication to preserving and sharing its artisans' skills with future generations.

SELF-WINDING



5100
Self-winding
Date, central seconds
60-hour power-reserve
Ø 30.6 mm





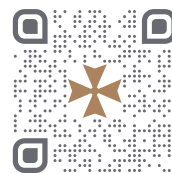
2025 - Printed in France - VMXP804030

As each gem-set watch is an individual piece, the data concerning the number of carats, given for information purposes of the inspected lots, can vary slightly from one watch to another.

Vacheron Constantin reserves the right to modify the models illustrated in the present catalogue at any time.

If you wish to receive more information on Vacheron Constantin, please contact our concierge service on:
www.vacheron-constantin.com

Follow [@vacheronconstantin](https://www.instagram.com/vacheronconstantin) on Instagram





VACHERON CONSTANTIN
GENÈVE